



HOW THE LOCAL PLAN TACKLES CLIMATE CHANGE

The Uttlesford Local Plan



Core Policy 1 requires development to mitigate and adapt to climate change by reducing emissions, promoting sustainable transport, energy efficiency, low-carbon materials, climate-resilient design, efficient use of resources, and enhanced green infrastructure. It requires most new development to submit a *Climate Change and Sustainability Statement* demonstrating how these measures are addressed, and an Energy Statement for larger schemes.

Core Policy 25 encourages the generation of renewable energy including the creation of community networks, taking into consideration environmental and amenity impacts.

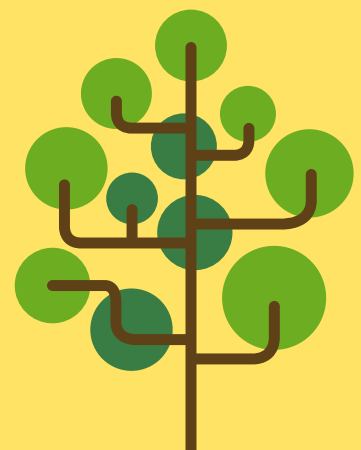
The new Uttlesford Local Plan 2021–2041, due for adoption in Spring 2026, is a 'climate-led' plan, requiring low-carbon, climate-resilient development that reduces emissions at source and improving residents' wellbeing and quality of life. New development will be ultra-low-energy with fossil-fuel-free buildings powered by renewable energy, and walkable, well-connected communities reducing car dependency, and strengthening green infrastructure, biodiversity and resource efficiency. Developed in collaboration with Essex County Council's Climate and Planning Unit, and consultants, Bioregional, the plan ensures climate ambitions are translated into practical, enforceable policies.

Core Policy 22 requires new buildings, and where possible extensions and conversions, to be net zero carbon 'in operation' by delivering ultra-low energy, fossil-fuel-free development with on-site renewable energy generation that matches or exceeds annual energy use. It sets strict space-heating and Energy Use Intensity targets with post-construction monitoring, or Passivhaus as an alternative compliance route.

Core Policy 23 requires all development to demonstrate integration of the cooling hierarchy, with major schemes to assess overheating risk.

Core Policy 24 requires development to minimise embodied carbon, justify demolition, and demonstrate reduction through design and materials. Major schemes must submit a Whole Life Carbon Assessment and meet specified embodied carbon targets for residential and non-residential development.

The Local Plan's spatial strategy focusses development in sustainable locations with the most potential for sustainable transport. Other policies require electric vehicle charging infrastructure, a network of active travel routes and connections to adjoining sites, sustainable transport infrastructure, a green infrastructure-led approach and biodiversity net gain above the statutory 10% wherever viable.



EXPECTED IMPACT ON CLIMATE CHANGE



- Taken together, these policies have strong positive implications for addressing mitigation and adaptation to climate change.
- Net Zero requirements will see significant reductions in emissions from new buildings and lower long-term energy demand which will help provide resilience against energy price increases.
- Reduced embodied carbon impacts will tackle emissions that occur before construction. Climate resilience will mean buildings can cope with future climate conditions long after occupation.
- Detailed viability work for the Local Plan infrastructure requirements demonstrated that these measures would add just 0.6% to the build cost of the average new house (0.8% for flats), when compared to the costs of meeting current regulations standards. This has ensured that the Local Plan standards would not stifle housing delivery.
- Developers will have to demonstrate performance through as-built verification and in-use energy monitoring, narrowing the performance gap between design and operation. Our Local Plan is providing a replicable model for wider adoption across Essex.
- The policies drew a great deal of comment during consultation, both in support and opposition. The Examination Inspectors were satisfied that the energy policies were sound and justified, and did not seek significant modification to the policies themselves.
- UDC's Planning Team, elected councillors, ECC and Bioregional colleagues have worked hard to ensure that the Council's climate change policies has a clear, mandatory and robust approach in our role in combating climate change.



Following a successful Examination, Uttlesford Local Plan 2021 - 2041 is due to be adopted in Spring 2026.

