



Sustainable Uttlesford 5th Feb 2026

AGM and 1st Birthday Celebration

AGENDA



Time	Item
6:55	Welcome
7:00	AGM
7:25	Blow Your Own Trumpet
8:00	Funding and Partnership Opportunities Forward Look to the Year Ahead
8:50	What next for Sustainable Uttlesford – Your Priorities
9:15	Networking (until 9:45pm)



AGM Agenda

1. Apologies for absence
2. Review of past years activities
3. Presentation Financial Accounts
4. Election of Officers and Committee members

Our Purpose



Core purpose of the organization:

- 1. Encourage, motivate and support** the village, town and other **local community sustainability groups**, through providing them **with expertise, advice, financial and other support**, as available.
- 2. Contribute to Uttlesford District Council's aim to reach net-zero carbon emissions by 2030 and to protecting and enhancing our local biodiversity.**

First Year Aims

We said we would



- Run regular meetings for the network
- Organise events and talks (on-line and face to face)
- Create a website and project/group directory with map
- Establish communications and social media process/activity
 - Develop means/process to apply for funding
 - Identify subject matter experts
- Participate in planning an Eco Conference
- Help parish/community eco groups get off the ground.

Achievements

What we have achieved so far

- Communications plan
- Website development
- Facebook page
- Membership / Directory
- Newsletter and Marketing
- Delivered successful member events
- Plan for Uttlesford Big Green Festival



Sustainable Uttlesford wishes you a very happy New Year!

We're looking forward to a busy year ahead including local network events and the [Uttlesford Big Green Festival](#) running 6 to 14 June.

Website and Project Directory



[Home](#) [Who We Are](#) [What We Do](#) [Groups & Projects](#) [Meetings & Events](#) [Grants & Funding](#) [News](#) [Useful Links](#)

[Contact Us](#)



Explore Groups and Projects

Our directory contains details of groups undertaking sustainable and environmentally focussed projects throughout the Uttlesford area.

Search for a specific group or browse projects by location or project type.

[Search Directory](#)

Highlights



Over 100 members



Range of Events: *Farm Cluster; Coppice; Waste*



Peacock Community Energy launched



New partnership University of Essex



Looking Forward



- Time and resource needed to establish SU
- Community development project manager and University of Essex partnership
- SU aim remains to develop funding/finance pipeline
- Uttlesford Big Green Festival 6-14th June 26
- SU opportunity to amplify voice of communities in Uttlesford (Devolution and LGR)
- Opportunities arising for Community Energy – Peacock Community Energy.
- Next event, 23rd April, Newport Rivers Group!



Sustainable Uttlesford Accounts

Bob Burlton, Treasurer

A	B	C	D
Sustainable Uttlesford Accounts for Year to 31-12-2025			
NOTES			
1	S U Bank Account was opened 15-05-2025		
2	SU allowed Peacock CE to use its account August to November 2025		
3	Uttlesford DC have made some payments directly on behalf of Sustainable Uttlesford		
	<i>S U Banking Transactions</i>	££££.PP	Reference
May '25	Deposit made by B Burlton 15-05 to open the account	500,00	A
Aug-Nov	Peacock CE Member Deposits (= member records)	1.940,00	B
	Less Peacock expenses paid from SU account	-315,20	C
	Owed to Peacock CE at 31-12-25	1.624,80	D= B-C
31/12/25	Net external credits to S U account at 31-12-25	2.124,80	E= A+D
	Owed to Peacock CE & B Burlton		

May - Dec	S U expenses paid from SU Account		
May - Dec	Bank Charges May to Dec 2025	-39,68	
Nov	S U Insurance Policy Nov 4th	-191,20	
	Total Expenses paid by SU Bank Account	-230,88	F
31/12/25	Calculated Account balance to 31-12-25	1.893,92	G=E-F
31/12/25	Actual Account balance per Statement 31-12-25	1.893,92	H
	OTHER SU EXPENSES PAID DIRECT BY UTTLESFORD DC		
	Website design and development	-5.680,00	
	Foakes Hall room hire - waste event	-109,00	
	Sub Total	-5.789,00	J
2025	Total S U Expenditure 2025	-6.019,88	K= F+J
	I am arranging a further, modest grant from Uttlesford DC to enable S U to pay the sums it owed at 31-12-25		
	I confirm this Statement of Accounts is true and complete Bob Burlton, Treasurer 26th Jan 2026		



Election of Officers and Committee Members



Committee Elections

Sustainable Uttlesford Committee

<i>Chair</i>	<i>Neil Reeve</i>
<i>Vice Chair (membership)</i>	<i>Bianca Donald</i>
<i>Vice Chair (external)</i>	<i>Vicky Reed</i>
<i>Treasurer</i>	<i>Bob Burlton</i>
<i>Secretary</i>	<i>Margaret Shaw</i>
<i>Communications Officer</i>	<i>Ian Johnson</i>
<i>Lead for Community Energy & Decarbonisation</i>	<i>Chris Dodge</i>
<i>Other Committee Members that have agreed to stand for reelection</i>	<i>Edward Gildea</i> <i>Stuart Withington</i> <i>Peter Wolstenholme</i>
<i>Other nomination for Committee Membership</i>	<i>John Lockton</i>



Blow Your Own Trumpet

What has been
happening in your
communities this
year?

Uttlesford Local Plan 2021-2041

How the new Local
Plan contributes to
climate action

HOW THE LOCAL PLAN TACKLES CLIMATE CHANGE

The Uttlesford Local Plan



Core Policy 21 requires development to mitigate and adapt to climate change by reducing emissions, promoting sustainable transport, energy efficiency, low-carbon materials, climate-resilient design, efficient use of resources, and enhanced green infrastructure. It requires most new development to submit a *Climate Change and Sustainability Statement* demonstrating how these measures are addressed, and an Energy Statement for larger schemes.

Core Policy 25 requires the generation of renewable energy including the creation of community networks, taking into consideration environmental and amenity impacts.

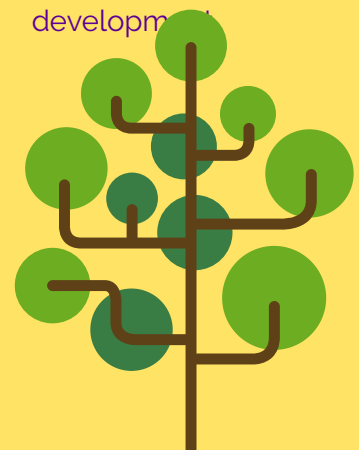
The new Uttlesford Local Plan 2021–2041, due for adoption in Spring 2026, is a 'climate-led' plan, requiring low-carbon, climate-resilient development that reduces emissions at source and improving residents' wellbeing and quality of life. New development will be ultra-low-energy with fossil-fuel-free buildings powered by renewable energy, and walkable, well-connected communities reducing car dependency, and strengthening green infrastructure, biodiversity and resource efficiency. Developed in collaboration with Essex County Council's Climate and Planning Unit, and consultants, Bioregional, the plan ensures climate ambitions are translated into practical, enforceable policies.

Core Policy 22 requires new buildings, and where possible extensions and conversions, to be net zero carbon 'in operation' by delivering ultra-low energy, fossil-fuel-free development with on-site renewable energy generation that matches or exceeds annual energy use. It sets strict space-heating and Energy Use Intensity targets with post-construction monitoring, or Passivhaus as an alternative compliance route.

Core Policy 23 requires all development to demonstrate integration of the cooling hierarchy, with major schemes to assess overheating risk.

Core Policy 24 requires development to minimise embodied carbon, justify demolition, and demonstrate reduction through design and materials. Major schemes must submit a Whole Life Carbon Assessment and meet specified embodied carbon targets for residential and nonresidential development.

The Local Plan's spatial strategy focusses development in sustainable locations with the most potential for sustainable transport. Other policies require electric vehicle charging infrastructure, a network of active travel routes and connections to adjoining sites, sustainable transport infrastructure, a green infrastructure-led approach and biodiversity net gain above the statutory 10% wherever viable.



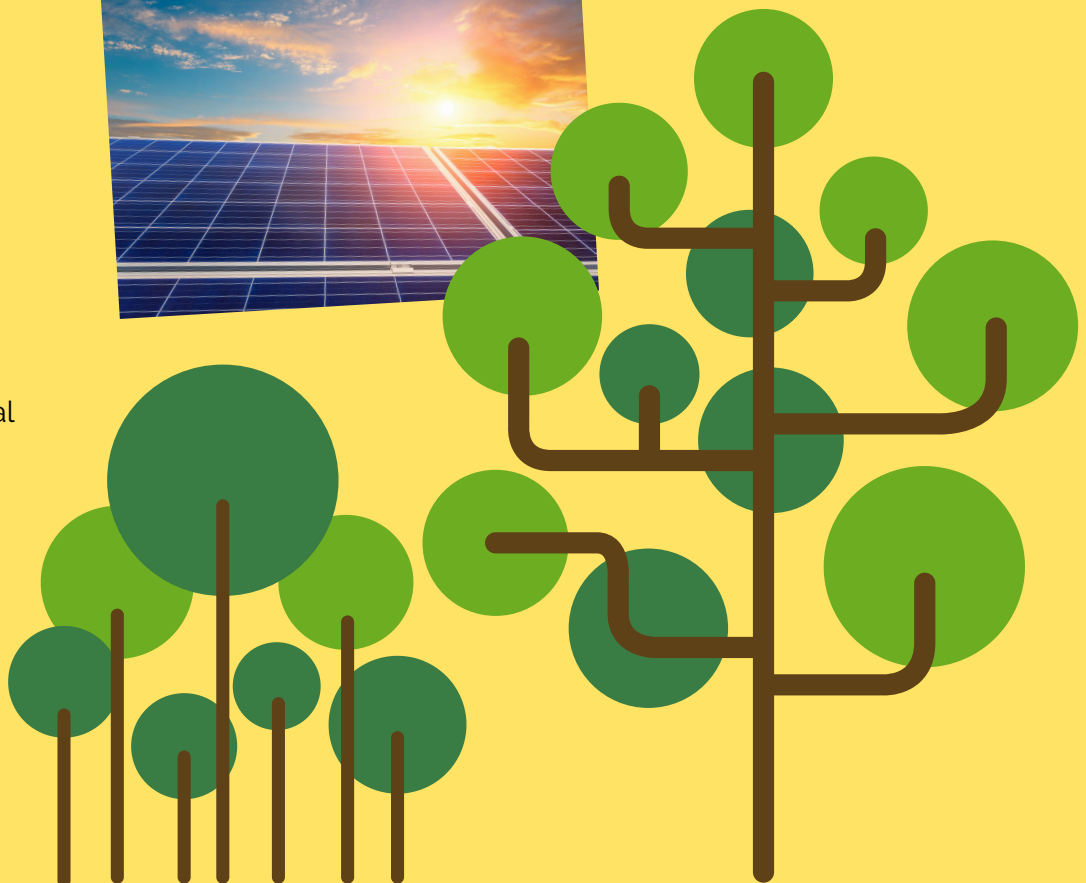
EXPECTED IMPACT ON CLIMATE CHANGE



- Taken together, these policies have strong positive implications for addressing mitigation and adaptation to climate change.
- Net Zero requirements will see significant reductions in emissions from new buildings and lower long-term energy demand which will help provide resilience against energy price increases.
- Reduced embodied carbon impacts will tackle emissions that occur before construction. Climate resilience will mean buildings can cope with future climate conditions long after occupation.
- Detailed viability work for the Local Plan infrastructure requirements demonstrated that these measures would add just 0.6% to the build cost of the average new house (0.8% for flats), when compared to the costs of meeting current regulations standards. This has ensured that the Local Plan standards would not stifle housing delivery.
- Developers will have to demonstrate performance through as-built verification and in-use energy monitoring, narrowing the performance gap between design and operation. Our Local Plan is providing a replicable model for wider adoption across Essex.
- The policies drew a great deal of comment during consultation, both in support and opposition. The Examination Inspectors were satisfied that the energy policies were sound and justified, and did not seek significant modification to the policies themselves.
- UDC's Planning Team, elected councillors, ECC and Bioregional colleagues have worked hard to ensure that the Council's climate change policies has a clear, mandatory and robust approach in our role in combating climate change.



Following a successful Examination, Uttlesford Local Plan 2021 - 2041 is due to be adopted in Spring 2026.





Funding and Partnerships

Rachel Luckin, Heritage Lottery Community Fund

Elias Watson, Essex Local Nature Recovery Community Grants

(Anglian Water Thriving Communities Fund)

Adam Birchweaver, Essex Energy and Low Carbon Team

Giles Tofield, Cultural Engine / University of Essex Innovation Fund project

The National Lottery Community Fund

Rachael Luckin
Funding Manager
Essex and Herts
Saffron Walden 5.2.26



Session Content

- Who we are
- Our Priorities and Missions
- What funding is available & how to apply



The National Lottery Community Fund



- National Lottery players contribute around £30 million to good causes every week
- The National Lottery Community Fund distributes over **£700m a year** to communities across the UK
- Largest single source of funding for community activities in the UK

Who can apply?

You can apply if your organisation is a:

- registered charity
- constituted voluntary or community group/organisation
- not-for-profit company or Community Interest Company
- statutory body such as a local authority, council or school.

We can't accept applications from:

- Individuals or sole traders
- Organisations that don't have at least two trustees who aren't married / in a civil partnership / long-term relationship, living at the same address, or related by blood.

If not listed, please check our website to see if your organisation is eligible –

www.tnlcommunityfund.org.uk



What can you spend the money on?

- Organisation running costs
- Equipment & materials
- One-off events
- Staff costs
- Training costs
- Transport
- Utilities
- Volunteer expenses
- Land, building or refurbishment projects



On Reaching Communities we also fund organisational development costs, including cost to help you become more environmentally sustainable

Funding Available

National Lottery Awards
for All
(£300-£20,000)

Reaching
Communities (Above
£20,001)

All applications should go through the website unless you have specific communication or accessibility requirements.



National Lottery Awards for All

(£300 - £20,000)

National Lottery Awards for All



- Grants from £300 up to £20,000 for up to two years
- Can only hold one grant at a time and for a maximum of £20,000 within a 12-month period
- Prioritises groups with lower incomes
- One-stage online application process – apply at any time

Please note, Awards for All is one of our busiest programmes and we are currently experiencing very high levels of demand

1. What would you like to do? (50 – 300 words)
2. How does your project meet our funding priorities? (50-150 words)
3. How does your project involve your community? (50-200 words)



National Lottery Awards for All

Environment

National Lottery A4A - Environment

This funding stream has been designed specifically for applicants that support communities to meet our environment mission.

We can fund projects that do at least one of these things:

- Help people connect with and care for nature in their area.
- Make a positive difference to the environment.

Please note you cannot hold both an Awards for All and Awards for All Environment grant. [For full information please see our web page.](#)



Reaching Communities (over £20,001)

Reaching Communities

- Grants over £20,001, running for up to 5 years
- Two-stage application process
- Applications are online with other formats available
- Requests should be proportionate to organisation's income and experience



Reaching Communities

Priorities



We will fund projects that:

1. Support places, people or communities experiencing poverty, disadvantage or discrimination
2. Support people and communities to shape the decisions that affect their lives
3. Align strongly with at least one of our missions

Priority 3

Our Missions

We will also prioritise projects that fit best with at least one of our missions

Come together

by providing inclusive places, spaces and activities. Especially for communities where people are least able to come together

Help Children & Young People to Thrive

by developing positive social and emotional skills

Be healthier

by addressing health inequalities. And helping prevent poor health

Be Environmentally Sustainable

by engaging with climate issues and having a positive environmental impact. And improving access to quality natural spaces

Be environmentally sustainable

- Empowering people to engage with climate issues and adapt to the impacts of a changing climate
- Taking part in activities to make a positive environmental impact. Like reducing carbon emissions or creating space for wildlife
- Helping communities to have access to quality nature. By increasing the amount and quality of natural space for wildlife. Meaning that people can experience nature around them, and that more varieties of wildlife can thrive

Reaching Communities

Two stage process

First stage is an expression of interest.

If you are invited to apply then we ask for more information about your project in a project proposal. We need further details about your delivery plan, financial budgeting, policies and procedures, financial overview and more.

BUT you do get a designated funding officer to support you with providing the information that we need prior to your application going to a decision panel.



Contact us

Rachael.Luckin@tnlcommunityfund.org.uk

Advice Line: 0345 4 10 20 30, or
general.enquiries@tnlcommunityfund.org.uk
<https://www.tnlcommunityfund.org.uk/>

Thriving Communities Fund

Thriving
Communities Fund

love every drop
anglianwater

Our Thriving Communities Fund has been created to support community groups in our region to improve their local environment and create positive social impact. We'll be working closely with local communities across the region to make the most of this opportunity; understanding the challenges they face and what this fund could mean for them.



Between 2025 and 2030, we'll be investing **£5.8m** of shareholder funds in a range of projects that focus on enhancing the water environment and delivering real social benefits. So, whether it's enhancing wellbeing and reducing flood risk, improving water quality, or helping local species thrive, there are countless ways this fund can help communities flourish.

We're aiming to distribute £1.5m in the first 12 months, with available grants ranging between £10,000 and £100,000.

We look forward to receiving your application.

Anglian Water's Thriving Communities Fund – doing the right thing today, for communities of tomorrow.

Who can apply?

'Not for profit' organisations from across the Anglian Water region.

How do I apply?

We're working with Cambridgeshire Community Foundation to manage the fund – you can apply via their website:

[cambscf.org.uk/
funds/thriving-co
mmunities](https://cambscf.org.uk/funds/thriving-communities)



Key dates

There are 3 funding rounds per year

Launch of the fund: 10 Nov 2025

Next round closes: 1 May 2026

Assessment period: May-June 2026

Awards distributed: July 2026

Local Nature Partnership Community Fund



- Linking habitats to improve ecological connectivity
- Enhancing biodiversity through habitat creation or restoration
- Improving access to green spaces for local communities
- Connecting people with nature, especially underrepresented or disadvantaged groups
- Protecting or improving existing valuable habitats
- Enhancing urban nature (e.g., green roofs, pocket parks, vertical gardens)
- Projects should seek to align with the Local Nature Recovery Strategy (LNRS)
- elias.watson@essex.gov.uk



• <https://essexnaturepartnership.com/local-nature-partnership-community-fund-2025/>



POWER

Planning Our Way to
Energy Resilience.

Adam Birchweaver

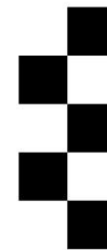
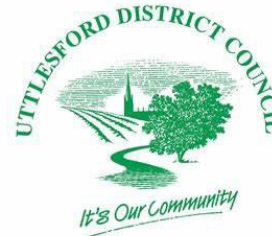
*Energy and Low Carbon
Project Officer*

Adam.Birchweaver@essex.gov.uk

Innovation Fund Introduction

5th February 2026

-
- University of Essex
 - Uttlesford District Council
 - Sustainable Uttlesford
 - Cultural Engine CIC



University
of Essex

The Fund and Partnership

- A fully-funded partnership between UDC and University of Essex to support the development of Sustainable Uttlesford – at a crucial time
- Partnership for at least 6 months – time to be allocated to specific issues relevant to Sustainable Uttlesford
- Builds on work undertaken in partnership with Cultural Engine Research Group (CERG) over the last decade – including the Wild Essex Imaginarium Programme



Wild Essex Imaginarium –
University of Essex, Sep 2025

University of Essex - Academic Partners



Professor Thomas Cameron –
Professor of Applied Ecology in the
School of Life Sciences



Dr Tony Sampson – Reader in
Digital Communications in the
Essex Business School

Key Elements of Partnership (still developing)

- Business/Concept Development for SU – and Programming support for Big Green Week
- Develop the role of SU based on grassroots/community need and strategic support required
- Plan into and beyond local government reorganisation
- Concept of SU as a crucial ‘mezzo-level’ organisation working between the hyper-local and strategic/government (convening)
- Curation and hands-on practical support for Big Green Week
- Practical support on fieldwork, and for developing clear strategies to deliver on Local Nature Recovery Strategy for Uttlesford District
- Potentially workshops on technical challenges (surveys, data etc.)
- Work towards a relatively small number of impacts – supporting new initiatives relating to nature recovery
- Developing the practical support concepts that SU may need

Working on Core Elements of the Uttlesford Big Green Week (June 2026)

- **Looking Back** – Celebrate the work done by UDC over last few years supporting and helping to initiative projects and significant community activity. What are the crucial elements of support that UDC (and others) provided that made a real difference when it comes to local action on nature recovery (and other activities)? Inform the future.
- **Looking Forward** - A creatively themed event where we look to the future of SU and the role it can play, looking at some of the challenges and opportunities as well as a framing of SU around the 'mezzo-level'
- **Rivers and Chalk Streams** – Celebrates the actions taken by local groups (most notably Newport Rivers Group), sets the action in some kind of strategic context (the role of grassroots etc.). Consider the crucial role of UDC to date in supporting this, and the need for a catchment-approach and longterm collaboration to have a major long-term impact on waterways across the District. Inform SU role. Inform East of England Water Summit.
- Possibly others.....Low carbon, LNRS focused etc. Depends on wider programme development



Sound Bites for the Year Ahead



Elias Watson, Essex
Local Nature Recovery
Partnership



Adam Birchweaver,
Essex Energy and Low
Carbon Team



Bob Burlton and Chris
Dodge, Peacock
Community Energy



Essex County Council

LNRS – Sustainable Uttlesford AGM February 2026



ESSEX
LNRS

LOCAL
NATURE
RECOVERY
STRATEGY

Local Nature Partnership Community Fund



- Linking habitats to improve ecological connectivity
- Enhancing biodiversity through habitat creation or restoration
- Improving access to green spaces for local communities
- Connecting people with nature, especially underrepresented or disadvantaged groups
- Protecting or improving existing valuable habitats
- Enhancing urban nature (e.g., green roofs, pocket parks, vertical gardens)
- Projects should seek to align with the Local Nature Recovery Strategy (LNRS)
- elias.watson@essex.gov.uk



• <https://essexnaturepartnership.com/local-nature-partnership-community-fund-2025/>

DEFRA Guidance on Delivery

Defra envisages that RAs will take on a role in the delivery of LNRSs through four key functions:

- Lead and convene a delivery partnership
- Embed LNRS into local decision making
- Identify strategic projects and facilitate project development
- Monitor and report on delivery of LNRS priorities

The new Mayoral Authority will become the RA for LNRS delivery.



Lead and convene a delivery partnership

- LNP primarily but also feeding into Flood Board, Executive Officers, Forest Partnership, EPOA
- LNRS promotion
- Comms and engagement/outreach re LNRS delivery:
 - Attending community events to promote LNRS to local delivery partners
 - Website management
 - Engaging with land managers including via farm clusters
 - Engaging with eNGOs
 - Engaging NE/EA/FC area teams



Lead and convene a delivery partnership continued..

- Supporting LNP to get constituted; decision making on LNP community fund; LNP Board Meetings to discuss LNRS implementation/LNP workstreams
- Working closely with Coastal Forum members to ensure alignment between work under the Shoreline Management plan, recreational impact mitigation scheme and marine management plans and the LNRS, making the connections between terrestrial nature recovery projects and impacts on coastal habitats; also linking to key partnership projects such as - “Transforming the Thames” could help with this too
- Working with coastal landowners (ECO) to better understand the barriers to delivery and where possible work with partners such as the MMO and Minerals and Waste team to design processes which could make landowner delivery more straight forward
- Working with the RFCC Environment Subgroup to identify schemes which could support nature recovery alongside flooding and erosion protection e.g. Felixstowe hydrocycle





Embed LNRS into local decision-making

- Supplementary guidance documents e.g. currently developing supplementary guidance advising LPAs and ecologists on LNRS implications related to BNG
- Work with planners to embed the LNRS, 20% BNG and green infrastructure in the SDS, local plans, guidance and planning decision making and monitor implementation GI planning guidance work
- Work with growth team to embed LNRS and natural capital approach into Local Growth Plan (to help secure resilient, sustained growth) and monitor implementation
- Work with public health leads to ensure awareness of the LNRS and enable shared projects to support enhanced health and wellbeing and reduced health inequalities
- Ensure Mayoral Authority and LAs have regard to LNRS when considering what they can do to conserve and enhance biodiversity under their biodiversity duty. MA will need to report on what they've done to carry out the duty in discharging their functions on rolling basis



Embed LNRS into local decision-making continued...

- Work with other teams within Mayoral Authority and LAs/Unitaries to encourage alignment between LNRS and other organisational priorities (e.g. climate adaptation, public health, highways, energy, minerals planning, food production, country parks, water quality and flood risk management)
- Support other public bodies in Greater Essex (e.g. MoD, FC) to have regard to LNRS under their biodiversity duty, including highlighting the opportunity for delivery of co-benefits (such as economic or health benefits) from having regard to LNRS
- Support other external partners (beyond public bodies) to use the LNRS and embed it into their activities e.g. water companies, NFU, CLA, National Trust, large private landowners
- Feed into new RAMS strategy



Identify strategic projects and facilitate project development

- Work with partners to identify potential projects that align with LNRS priorities, and strategically prioritise and coordinate development/scaling-up of these based on local circumstances
- Leverage more private finance into nature recovery across Essex beyond BNG (e.g. water company funding, East of England Landscape Enterprise Network, Woodland Carbon Code, woodland water code, saltmarsh carbon)
- Work with members to push for legislative support to promote private investment in green delivery
- Working with partners (including across LNRS boundaries) to support strategic funding bids e.g. Landscape Recovery; Protected Site Strategies



Identify strategic projects and facilitate project development continued...

- Work with partners to analyse project feasibility and help projects that need external investment to become 'investment-ready'
- Providing support to landowners interested in woodland creation or tree planting and maximise opportunities for street tree planting
- Track BNG supply and demand across Greater Essex and alignment with LNRS; sharing information online with stakeholders to help drive and shape the market
- Maintain a record of (and mapping of) projects being planned/implemented (or committed) that will support LNRS delivery (what, where, who, funding), publicising updates on progress (and sharing with Defra/NE)
- Produce guide to creating accessible green space



Monitor and report on delivery of LNRS priorities

- Collect information on nature recovery actions (re habitat creation, restoration, management and protection; and species conservation) to complement national level monitoring
- Hosted meetings with prospective monitoring partners to find out more about options to use satellite data as part of monitoring – Awaiting further guidance, attending in-person workshops at National LNRS event in Feb so more info then!
- Wider options to consider: Establish local monitoring groups? Contract monitoring partner to track delivery? [Can't rely on self-reporting by landowners]

Strategic influencing to support LNRS delivery

- Engage with central government (Defra, NE, EA, FC, MHCLG) on policy, guidance and funding needs to support LNRS delivery (e.g. SFI and BNG)
- Engage in strategic forums focused on environmental issues such as ADEPT, WRE and LGA to share learning and good practice and influence policy
- Support members to engage at a political level to promote strong policy to support nature recovery
- Work with members and other lobbying bodies to push for legislative support to promote private investment in nature recovery delivery

Risks to delivery



- Uncertainty around central government support for environmental initiatives and farming i.e. SFI and BNG
- Current funding runs until March 2026 and is to support “transition from LNRS preparation to delivery” – still waiting on clear guidance from Natural England on monitoring success
- Change will have to be actively monitored - we can't solely rely on self reporting from landowners, especially without incentive
- Changing priorities in local politics e.g. movement away from climate phraseology, closing of EFI etc.
- Uncertainty around devolution and LGR
- Public/private finance



View the LNRS/Get in touch

www.essex.gov.uk – Plans & Strategies

www.essexnaturepartnership.com

nature.partnership@essex.gov.uk



Essex County Council

POWER

Planning Our Way to
Energy Resilience.

Adam Birchweaver

*Energy and Low Carbon
Project Officer*

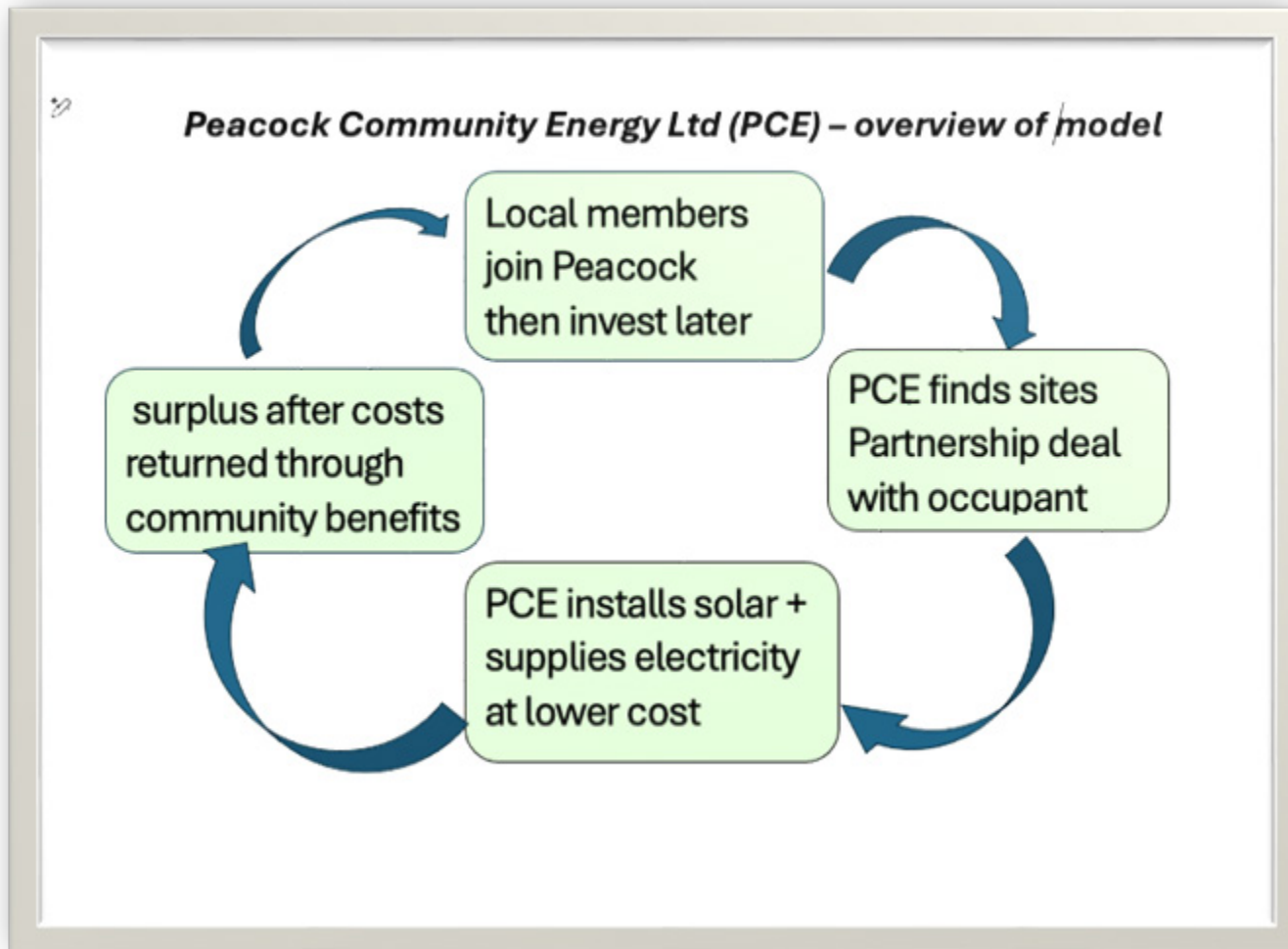
Adam.Birchweaver@essex.gov.uk

Peacock Community Energy

Community Energy
How it works...



Peacock Community Energy



Peacock Community Energy



www.peacock-ce.coop

Peacock CE Projects

1. Part ownership of a commercial solar farm
2. Working with Essex CC on school rooftop solar PV
3. Other smaller projects, possibly as Energy Local schemes





***6 to 14 June
2026***

What Next for Sustainable Uttlesford

What are your priorities?

What could you offer the Sustainable Uttlesford network?

What can you do as part of the Uttlesford Big Green Festival?

Thank You!

